

How to setup NDAS in MX760HD



What is NDAS (Network Direct Attached Storage)? It is useful technology that makes your PC recognize Internal HDD inside MX-760HD which is connected to your wired or wireless home network.

>> For use of NDAS, you should <<

1. Setup NDAS in MX-760HD
2. Install NDAS software in PC

First, MX-760HD must be connected to wired or wireless network.

>> Caution <<

- NDAS is not working when USB slave cable is used.
- Set "STOP" when NDAS is not being used.
- If you use NDAS when MX-760HD runs files (movies or pictures), then you may experience a drop in performance.
- It may take a while to recognize MX-760HD as a local hard disk in "My Computer" window depending on your network system.
- After the use of NDAS, remove or dismount MX-760HD safely. Similarly to external HDD device, you can use "remove hardware safely" icon or "DISMOUNT" in NDAS icon. Otherwise, your data can be damaged.
- The performance may decrease if more than two computers access NDAS simultaneously.

1. Setup in MX-760HD

- 1) Connect MX760HD to TV. Select "Misc Options" Bottom left as shown below. Select "NDAS".



- 2) Press ENTER, and you can select "START/STOP" option. Select "START" (Highlighted). (STOP is below)



- 3) NDAS item is changed from "STOP" to "START". Save the current setting by pressing "SETUP" button.

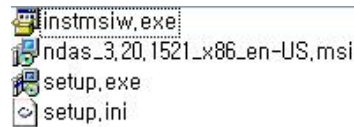


How to install NDAS software in PC

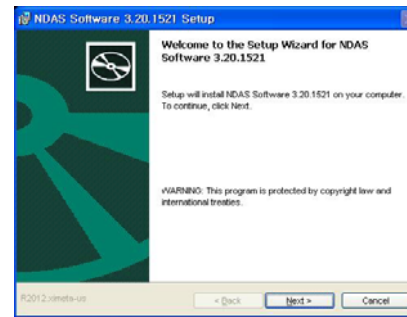


2. Install NDAS in PC

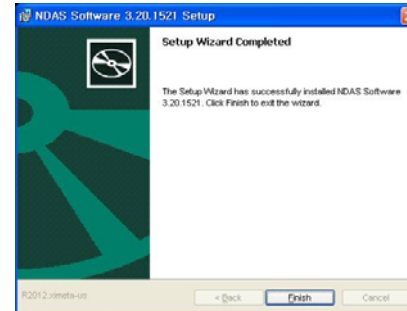
- 1) Run setup.exe.



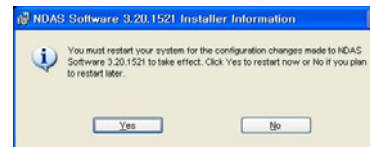
- 2) Follow the procedure from NDAS software setup wizard.



- 3) Click "Finish" to get the setup completed.

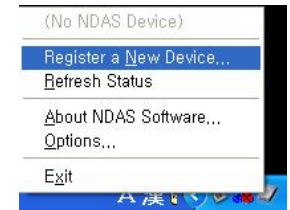


- 4) Click "Yes" to reboot your computer.



3. Register NDAS

- 1) In the bottom right icon tray, click the NDAS icon and select "Register a New Device..."



- 2) Click [Next] in NDAS Device Registration wizard.



- 3) Specify the name for the NDAS device and click [Next].



How to install NDAS software in PC



4) Enter NDAS ID and Write key, and click [Next].



>> **Caution** <<
Backup NDAS ID and Write key. It will not be issued again.

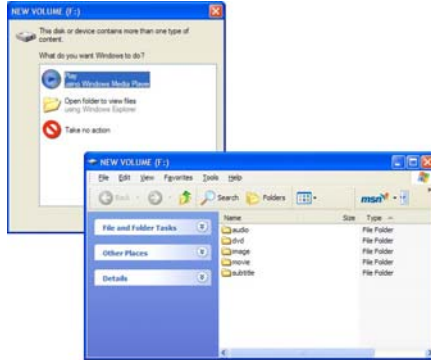
5) If ID and key are correct, you will be asked the following after searching for the NDAS device. Click first option and [Next].



6) Finish the installation of NDAS Controller by following the wizard.



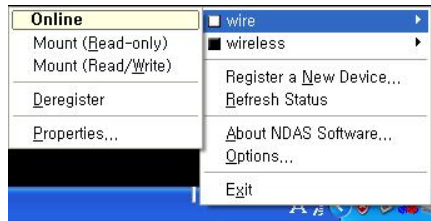
7) After the installation, MX-760HD's HDD is recognized.



3. Mount / Dismount

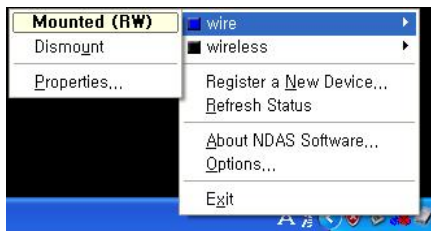
A. Mount

1) By clicking the NDAS icon in the bottom right icon tray, you can confirm the registered NDAS device. You can select "wire" or "wireless" to get it online. (e.g. wire is online (white) and wireless is offline (black) in the figure below)



Then, select Mount (Read/Write).

2) When it is connected to NDAS device, the selected item is indicated as "blue color" and "Mounted (RW)".



Shortly after, the NDAS device will be accessed. It may take a while to recognize MX-760HD as a hard disk depending on your network system.

How to install NDAS software in PC

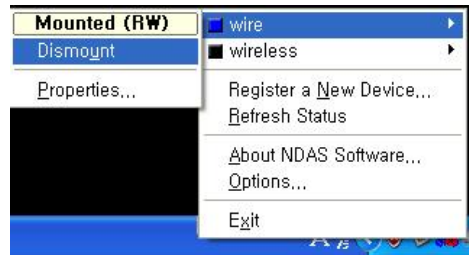


B. Dismount

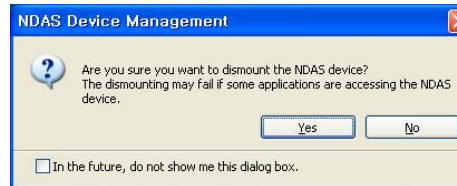
1) Use "Remove NDAS SCSI Controller safely....." as in the figure below.



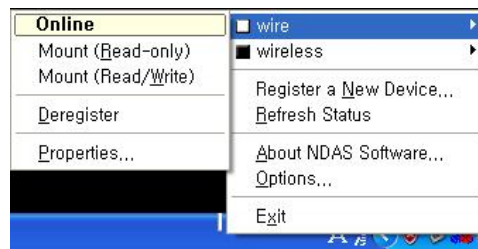
Or, by clicking the NDAS icon, select "Dismount" option.



2) Click [yes] to dismount your device.



3) After dismounting, you can see the current status as shown in the figure.



In the case that you receive a message saying that the device can not be removed, check if NDAS window is open, or whether NDAS is still operating. (e.g. transfer, play, remove files)
When the operation of NDAS is completely finished, try dismounting again.

4. Confirm NDAS device in Device Manager

You can check to see if your NDAS device has been installed in "Disk Drive" and "SCSI and RAID controller" under Device Manager.

