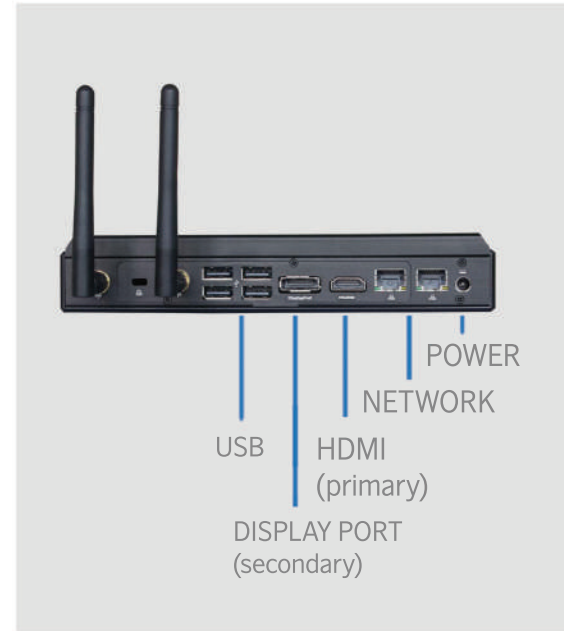


# XHIBIT

## Installation



### Network Cable

- Also called CAT5 cable
- Connects the signage device to the network switch or router



### Power Adapter

- Supplies power to the signage device
- Input power: 110V  
(Optional configuration: 220V)



### HDMI Cable

- Video cable connects the signage device to the display screen or monitor
- HDMI can transmit both video and audio signals

## Power Port

Power port is to connect the signage device to a power source via a power cable (included).

Location of this port may vary according to the model. Please check the sides of the device, if needed.

## HDMI Video

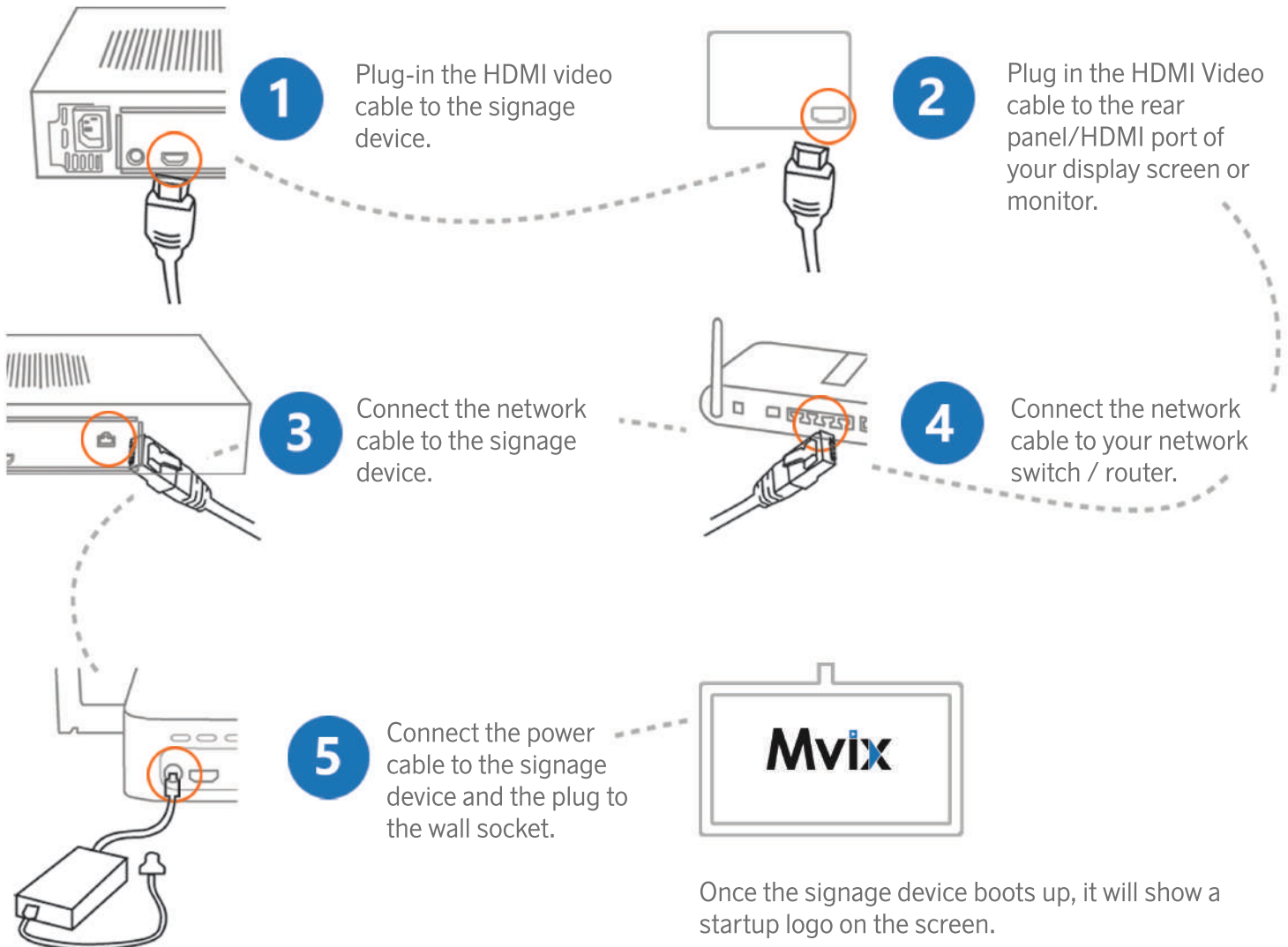
HDMI port is to connect the signage device to the screen via a HDMI cable (included).

Connect one end of the HDMI cable to the signage device and the other end to the display screen.

## Network Port

Network Port is to connect the signage device to the internet via a CAT5 cable (included).

Connect one end of the network cable to the signage device and the other end to the network switch / router.



Once the signage device boots up, it will show a startup logo on the screen.

Mount the device behind the display screen.

Operate the signage device via the web-based software ([www.xhibitsignage.com](http://www.xhibitsignage.com)).

