




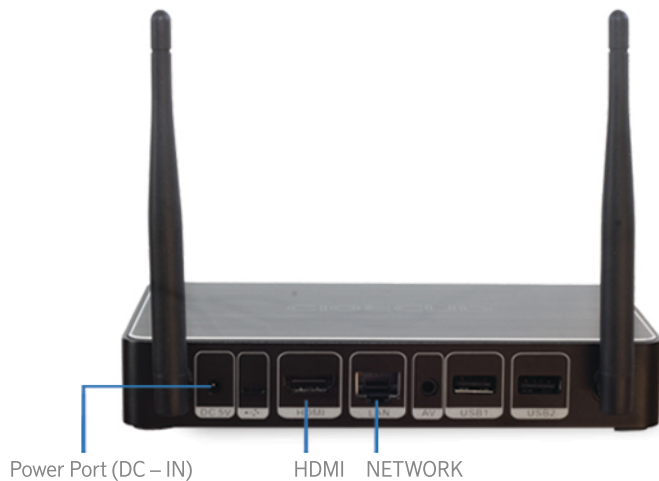


ELITE

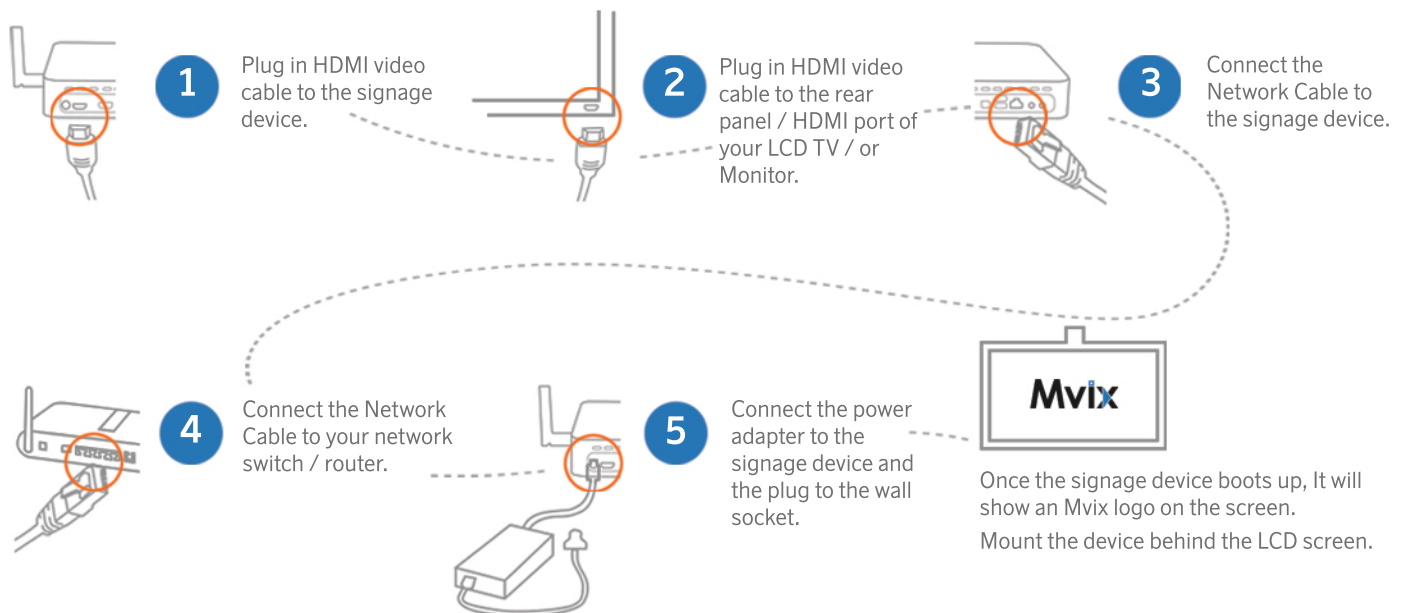
Installation

What's Included

-  Mvix Elite signage player
-  AC power adapter
-  HDMI cable
-  Ethernet (CAT5) network cable
-  Remote (with batteries)



DEVICE SETUP



OPTIONAL WIRELESS CONNECTIVITY

Bring up the Settings display by right-clicking on the mouse or pressing the back arrow on the remote.

Select the "settings" tab on the left.

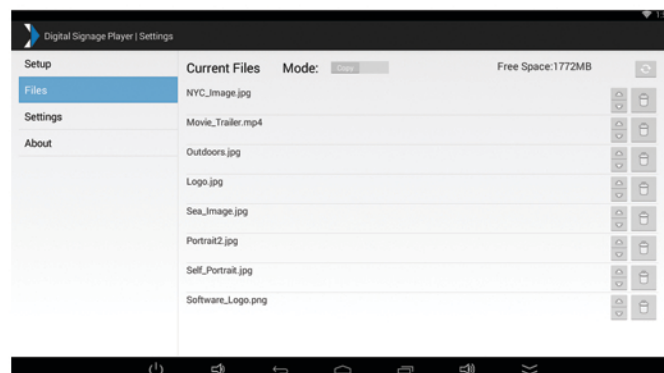
Select your Wifi network and enter the proper information.

Right-click or press the back arrow to get back to the signage.

ADDING FILES

1. Connect a USB flash drive into your computer.
2. Verify the drive is formatted as FAT32.
 - a. If not, reformat the drive as FAT32 using instructions specific to your operating system.
3. On the root directory of the flash drive (ex. E:\), place your media content.
 - a. Supported images: JPG, PNG, BMP, and non-animated GIF.
 - b. Supported videos: MP4 (H.264), MKV.
 - i. Once you change the extension from txt to url, your computer may not recognize it, you may have to select “Open With Notepad” to edit the file.
 - ii. The file can be named anything, so long as it ends with ‘.url’.
 - c. For content in folders, create a standard text file ending in .txt.
 - i. In this file, place all of your web media links, one on each line.

4. Safely remove the drive from your computer.
5. Connect the drive to the Slite device.
6. Wait for the copy/sync success confirmation, then remove the drive.
 - a. If unsuccessful, verify your USB drive is FAT32 or try another drive.



SETTING UP A PLAYLIST

Getting to the Menu

Right-click on the mouse, or press the back arrow on the remote. Ensure the remote is pointed towards the front of the device, where the blue light is located.

Setup Menu

Start Time/Stop Time

Between these times the playlist will actively display on the screen. The device will enter a sleep state outside of this time range.

Slideshow Interval

The duration which images and web pages appear. Please note that videos will display completely before moving on to the next content item, regardless of what value it is set to.

Content Transition

The transition type will determine the type of animation that is used when changing from one content item to another.

Reload Time

This timer, when enabled, is used to automatically update your web content once a day at the specified time. To disable reload, if you wish to only manually update or use the device in standalone mode, switch the selector to off.

Files Menu

The Files menu displays a list of all of the current content files loaded onto your device. Please be aware that file names must be unique. If you would like to play a single item in the playlist multiple times, then copy the content to an additional file and give it a unique name.

Mode: Changing between “Copy” & “Sync”

The “Copy” mode will copy over new content and place it alongside the current content on the device. The “Sync” mode will first delete all of the content that resides on a device, then copy over all of the new content.

Content Order

Using the small arrows on each row of an item you can move the item up or down in the list. This list functions as the order that the content will play in your playlist.

Trash

Clicking on the trash can icon allows you to delete the content item from the device.

